

## MSATA MINI D150Q



## FEATURES

- Support static wear leveling algorithm
- S.M.A.R.T. & i-S.M.A.R.T. Supported
- Intelligent system for error recovery
- Excellent data transfer speed
- Compliant with JEDEC MO-300, SATA-IO mini SATA

**R: 66MB**  
**W: 21MB**

**S.M.A.R.T**

**Wear**  
**Leveling**

**PIO 0~4**  
**Support**

**MDMA**  
**UDMA**

**MO-300**

## Specifications

Connector Type	miniPCIe Pin Define for SATA Signal, 23:TX+; 25:TX-; 31:RX-; 33:RX+
Flash Type	MLC (Multi Level Cell)
Density	4GB, 8GB, 16GB, 32GB, 64GB
Transfer Mode	SATA II, SATA I, PIO 0~4, MDMA 0~2, UDMA 0~6
Sustained R/W Performance	Read : 66MB/sec (max.) Write : 21 MB/sec (max.)

## Environmental

DC Input	+3.3V DC $\pm$ 5%
Power consumption (Max.)	Read: 180 mA Write: 220 mA Idle: 110 mA
Operating Temperature	0°C~+70°C (Standard Grade) -20°C~+85°C (Extended Grade)
Storage Temperature	-55°C~+95°C
Humidity	Relative Humidity: 10-95%, non-condensing
Flash Endurance	3,000 program/erase cycles
MTBF	> 3,000,000 hours
Certification	CE, FCC, ROHS
Warranty	2 years

## Mechanicals

Dimension (W x L x H)	29.85mm x 26.8mm x 3.7mm
Weight	7g $\pm$ 1g
Vibration	7 Hz to 2K Hz, 3 axes
Shock	Duration: 0.5ms, 1500G, 3 axes

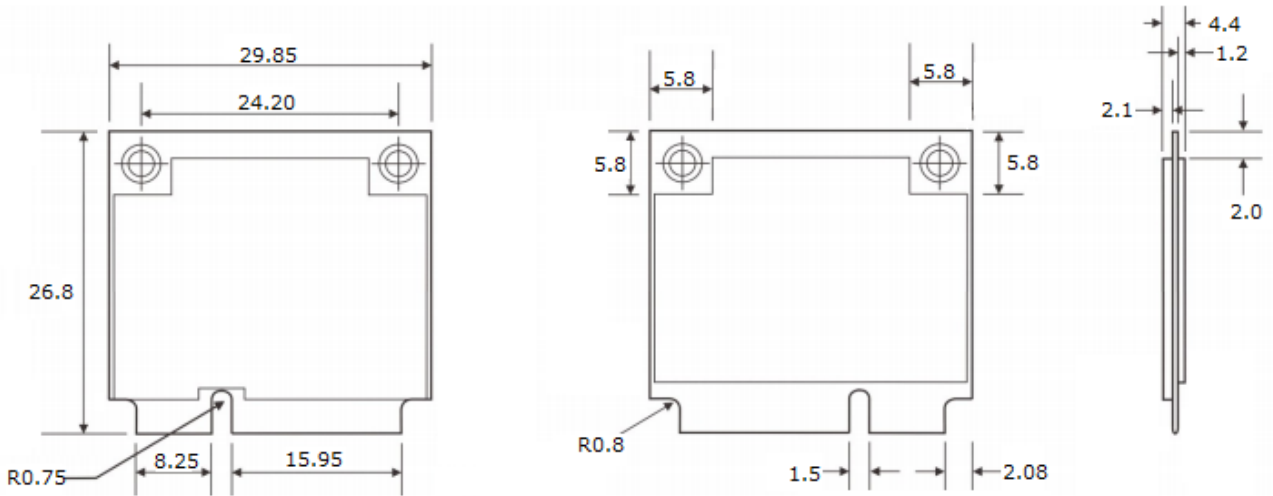
## Health monitoring Tool

S.M.A.R.T.	Supported
i-S.M.A.R.T.	Supported (Utility for Windows, Linux)

## Ordering Information

Capacity	Standard Grade	Standard Grade
4GB	DHPS-04GJ30A <u>C</u> 1SN	DHPS-04GJ30A <u>E</u> 1SN
8GB	DHPS-08GJ30A <u>C</u> 1DN	DHPS-08GJ30A <u>E</u> 1DN
16GB	DHPS-16GJ30A <u>C</u> 1DN	DHPS-16GJ30A <u>E</u> 1DN
32GB	DHPS-32GJ30A <u>C</u> 1DN	DHPS-32GJ30A <u>E</u> 1DN
64GB	DHPS-64GJ30A <u>C</u> 1DN	DHPS-64GJ30A <u>E</u> 1DN

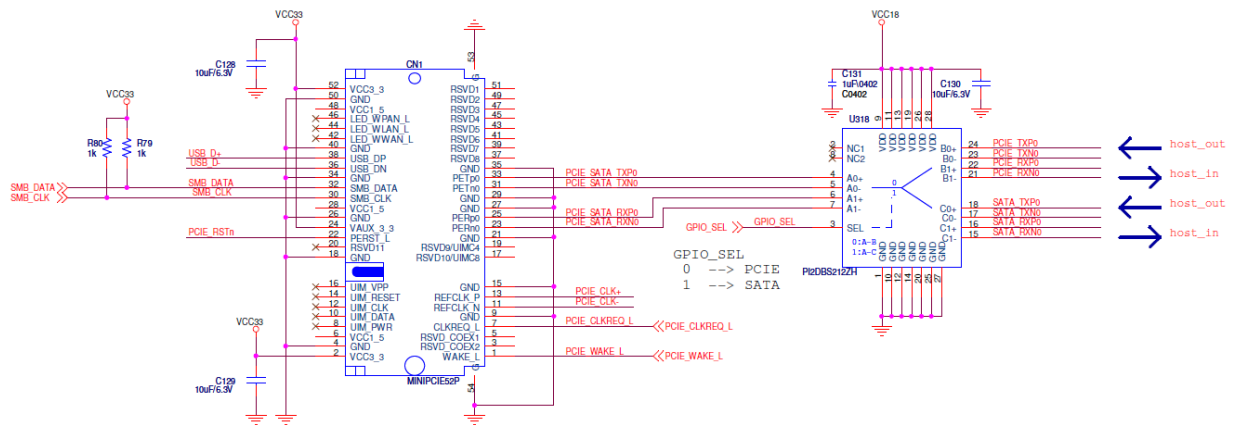
# Mechanical Dimension



Tolerance  $\pm 0.1\text{mm}$

The pin assignment, component keep out area of InnoLite mSATA mini D150 is followed by JEDEC MO300 Specification.

## PCIe and SATA Signal Switch MB Reference Circuit Design



We suggested MB can be designed a "signal bus switch IC" to transfer the differential channels. Due to the bi-directional nature of bus switch IC, it can be used to allocate bandwidth between PCI express and SATA II signal. You can increase one more option for your miniPCIe device.

DESIGN • SERVICE • QUALITY • DELIVERY